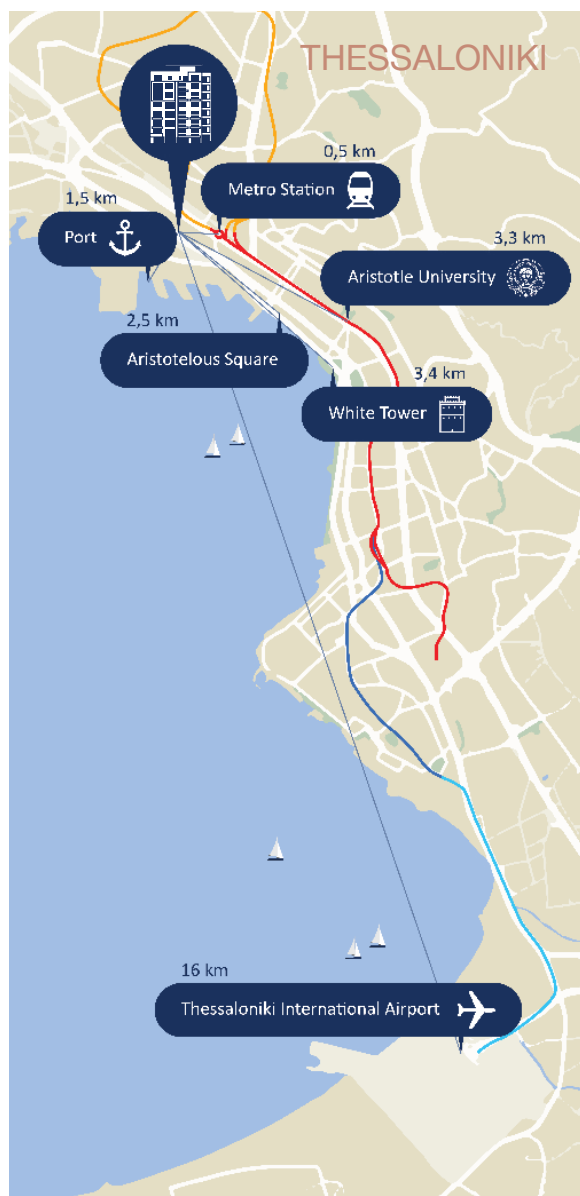


SOHO SQUARE

WEST CENTER THESSALONIKI



STRATEGIC LOCATION

With convenient transport links, shopping centers, university faculties and concentration of offices and workplaces.





West center Thessaloniki in the 'One Salonica' area, is the area that has become an extension of the city center in recent years and offers new residential projects alongside some of the best entertainment venues in the city, new employment centers that are developing at a fast pace and the city's largest shopping centers with international brands that are a magnet for all the city's residents.



One Salonica



Hub 26

SOHO SQUARE

The building is located in a strategic location adjacent to ONE SALONICA MALL and to the well known IBERICO restaurant that attracting visitors to the area until the late night hours. The nearby buildings were renovated in the last year, new tenants entered the area and new businesses opened.

On the plot located at the corner of Katerinis and Geor. Katechaki streets we will build 7 stories building above a ground covered parking floor.

Due to the location of the plot in the meeting corner of two streets, the apartments benefit from a wide frontage and several air directions are possible. The new building will be built according to strict environmental standards, will include 20 apartments and an open roof terrace overlooking the harbor for the tenants use.

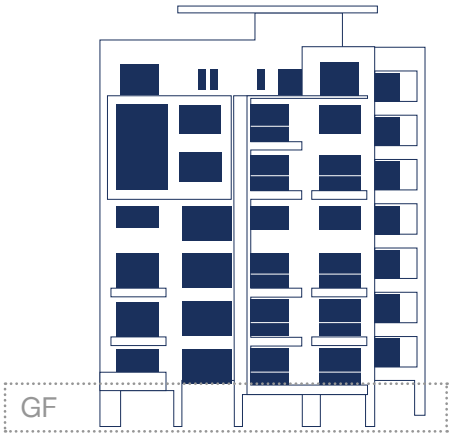
The development plans for the area are numerous and include the new Holocaust Museum that will be built opposite to the mall, the renewal and renovation of the surrounding streets, the opening of the nearby metro station, new residential construction projects and more. The area is already in demand for Airbnb holiday apartments alongside housing for students and residential apartments for young professionals.



Roof terrace view to the harbor



Ground Floor



1st Floor



Studio

1.2

Total Area: 31.05 sqm

1.3

Total Area: 27.24 sqm
Balcony: 6 sqm

1.4

Total Area: 30.18 sqm
Balcony: 5.52 sqm

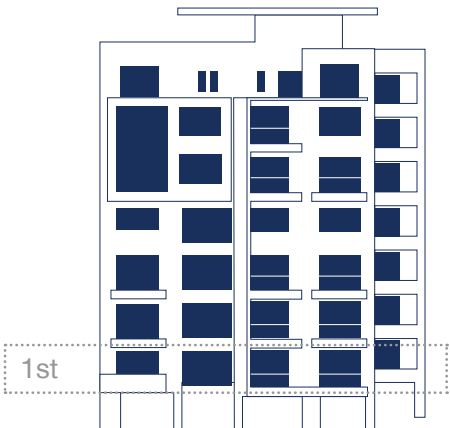
1.5

Total Area: 37.76 sqm
Balcony: 6 sqm

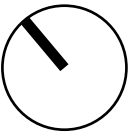
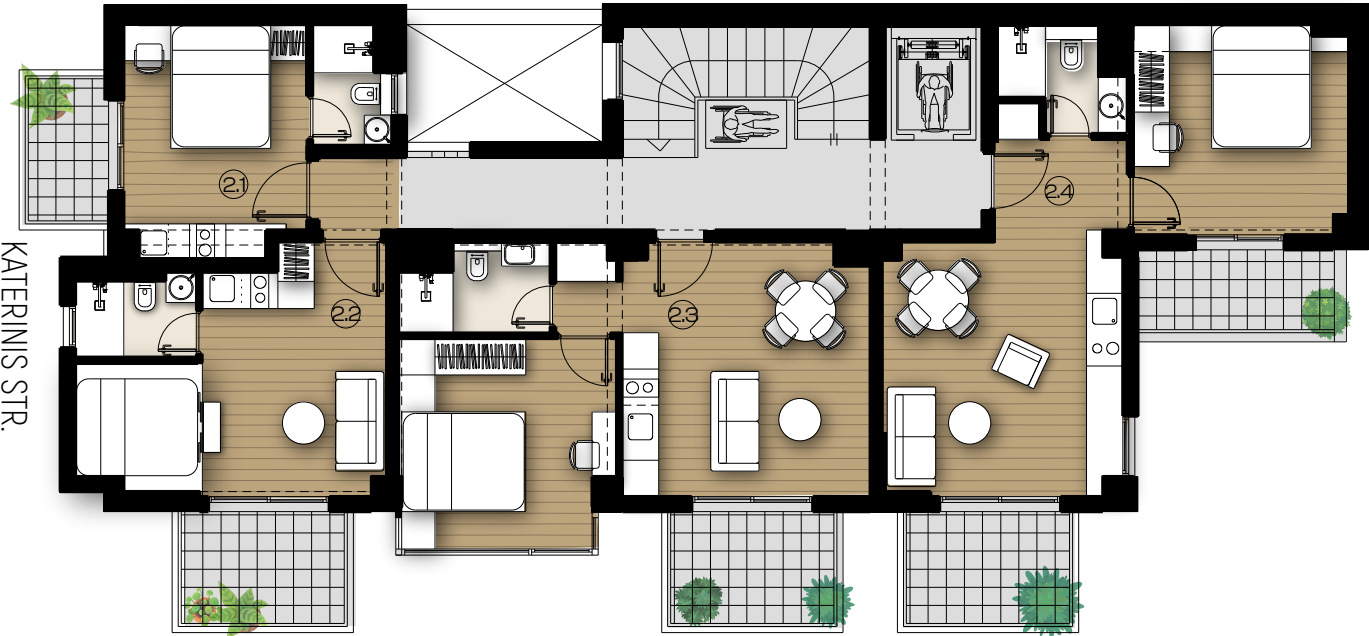
1-bedroom

1.1

Total Area: 59.80 sqm
Balconies: 2.25 + 11.56 sqm



2nd Floor



KATECHAKI STR.

Studio

2.1

Total Area: 27.21 sqm
Balcony: 3,92 sqm

2.2

Total Area: 34.31 sqm
Balcony: 6 sqm

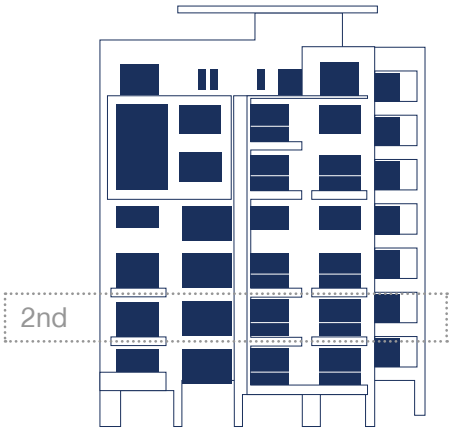
1-bedroom

2.3

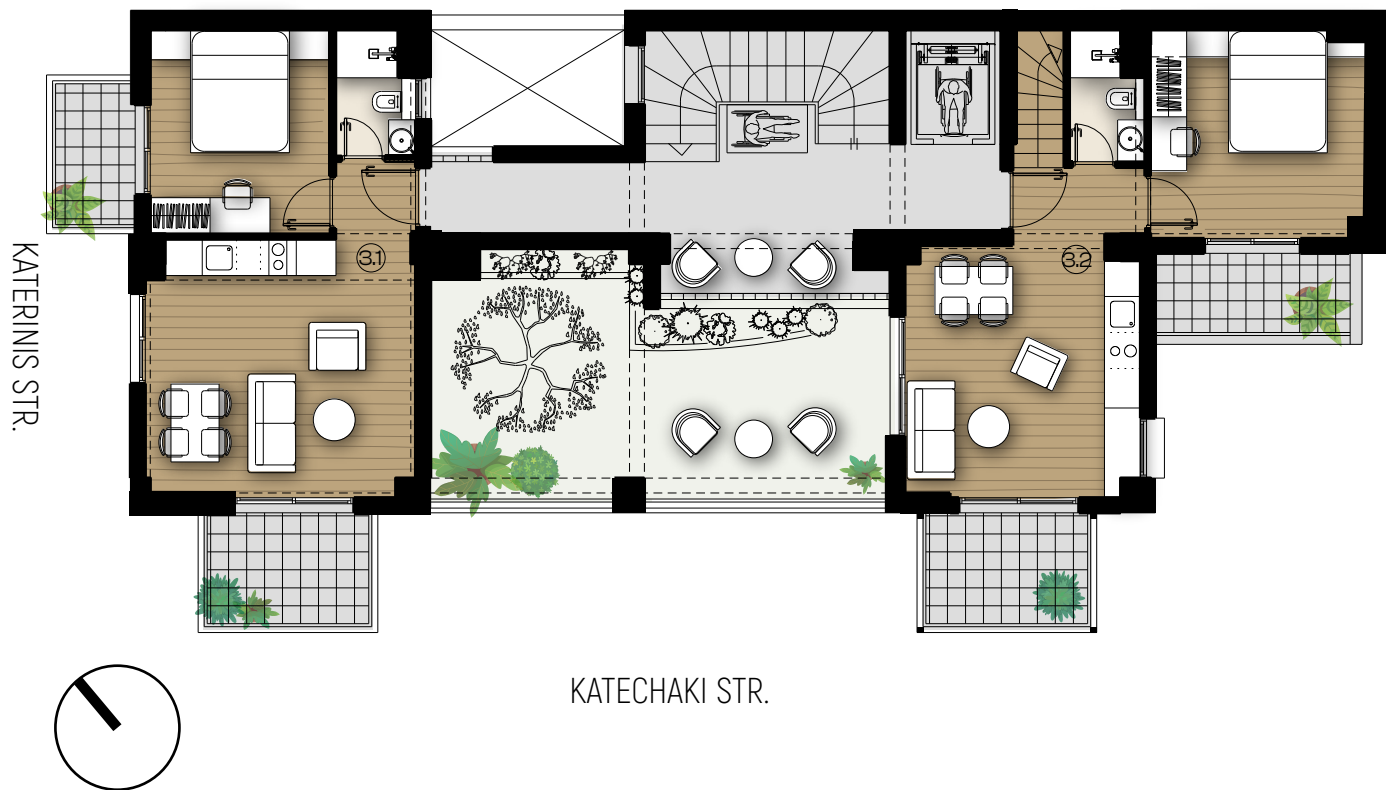
Total Area: 58.28 sqm
Balcony: 6 sqm

2.4

Total Area: 66.71 sqm
Balconies: 6 + 5.52 sqm



3rd Floor



2-bedroom

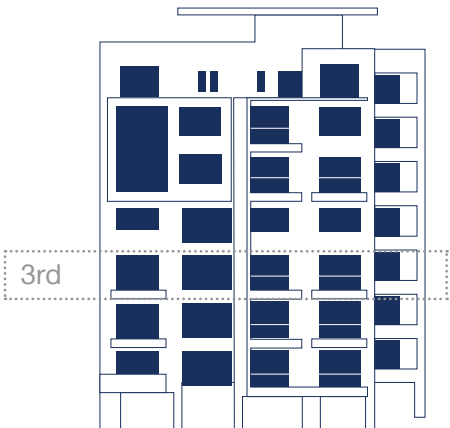
3.1

Total Area: 61.72 sqm
Balconies: 3.92 + 6 sqm

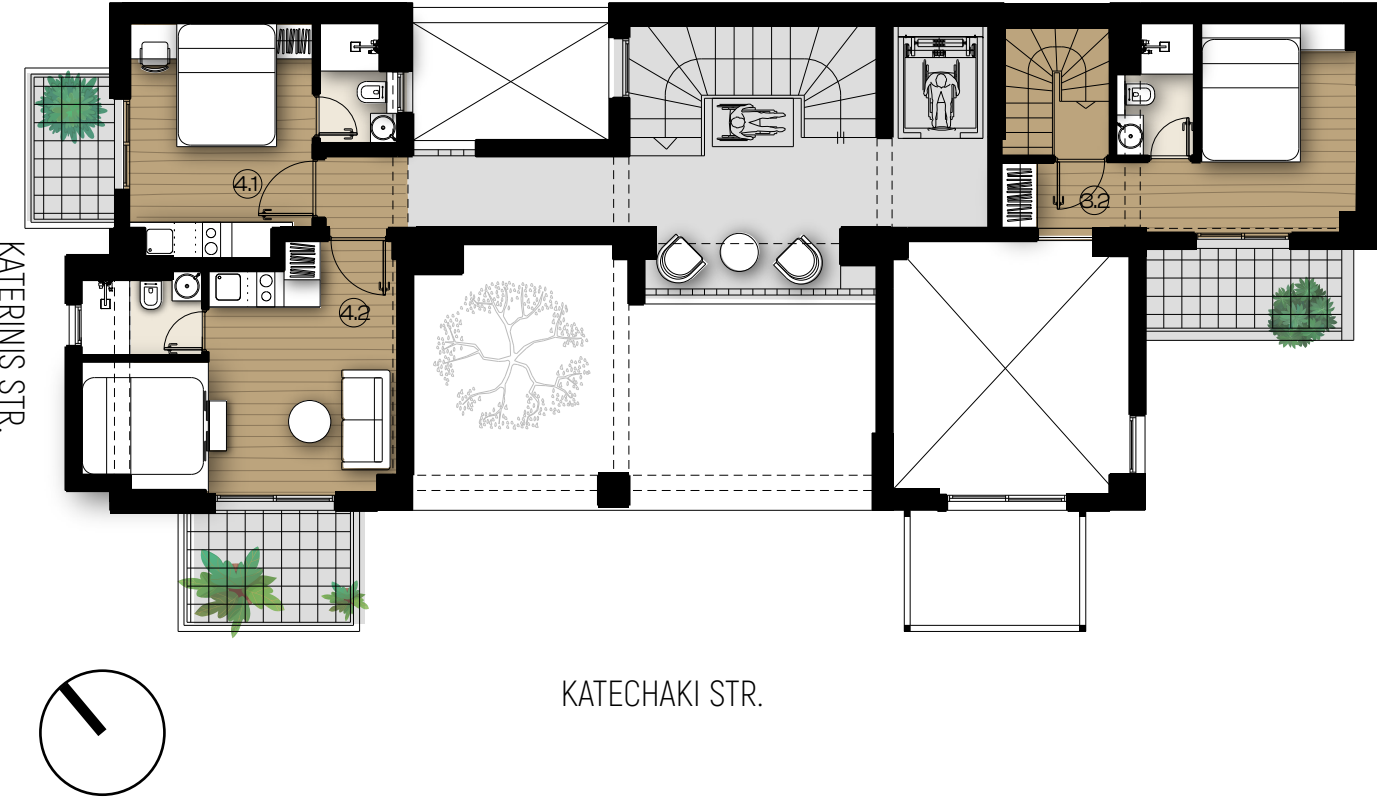
1-bedroom

3.2

Total Area: 75.50 sqm
Balconies: 6 sqm (open) +
5.52 sqm (covered)



4th Floor



Studio

4.1

Total Area: 30.90 sqm
Balcony: 3.92 sqm

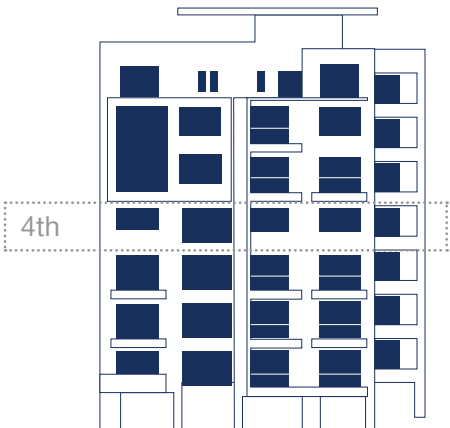
4.2

Total Area: 36.23 sqm
Balcony: 6 sqm

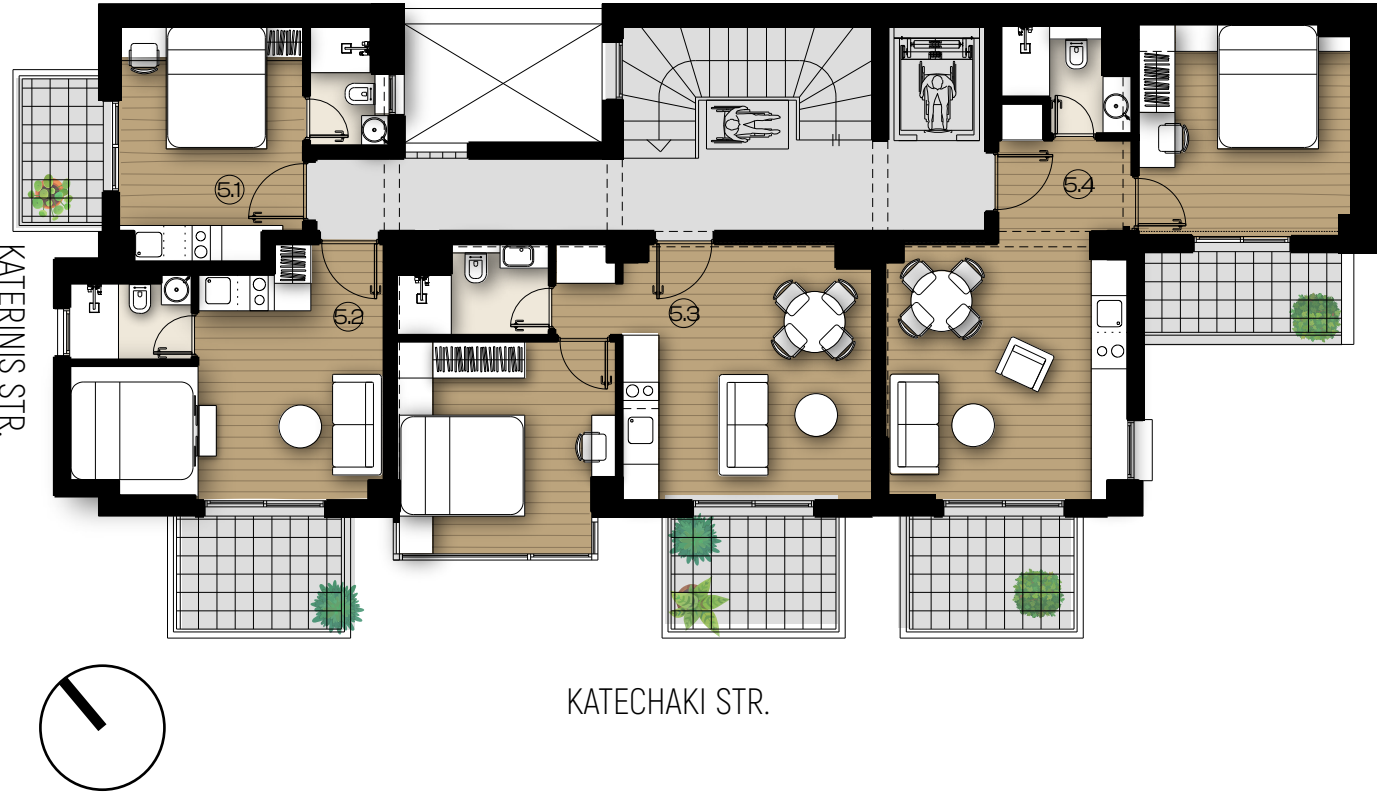
2-bedroom

3.2

Total Area: 40.67 sqm
Balcony: 5.52 sqm



5th Floor



Studio

5.1

Total Area: 27.21 sqm
Balcony: 3.92 sqm

5.2

Total Area: 34.33 sqm
Balcony: 6 sqm

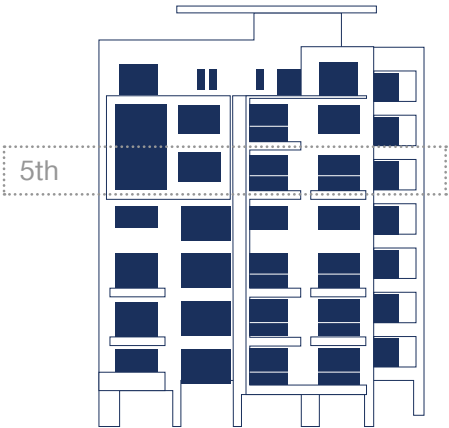
1-bedroom

5.3

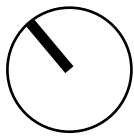
Total Area: 58.28 sqm
Balcony: 6 sqm

5.4

Total Area: 66.71 sqm
Balconies: 6 sqm (open) +
5.52 sqm (covered)



6th Floor



KATECHAKI STR.

2-bedroom

6.1

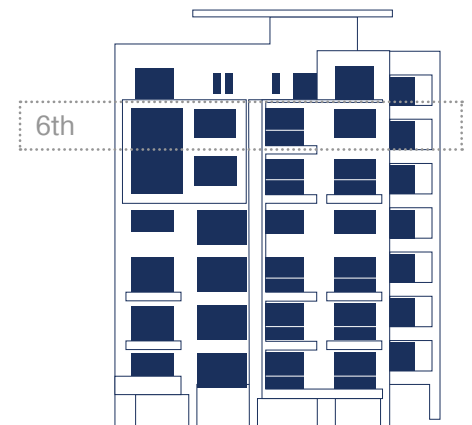
Total Area: 63.96 sqm
Balconies: 3,92 + 6 sqm

6.2

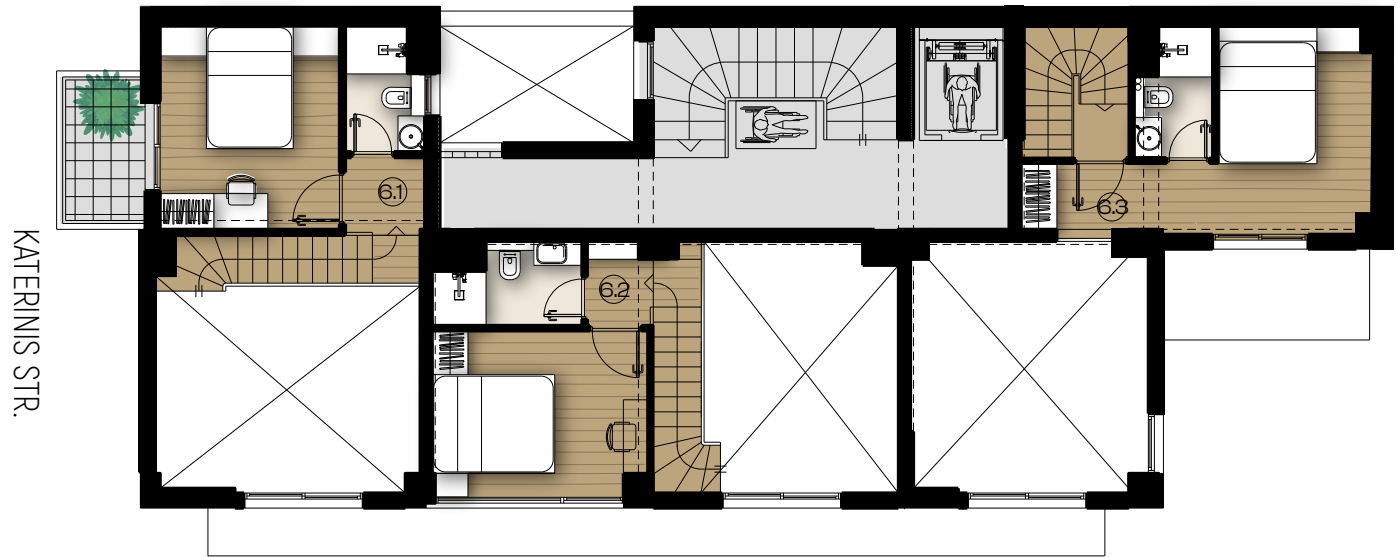
Total Area: 58.28 sqm
Balcony: 6 sqm

6.3

Total Area: 66.71 sqm
Balconies: 6 sqm (open) +
5.52 sqm (covered)



7th Floor

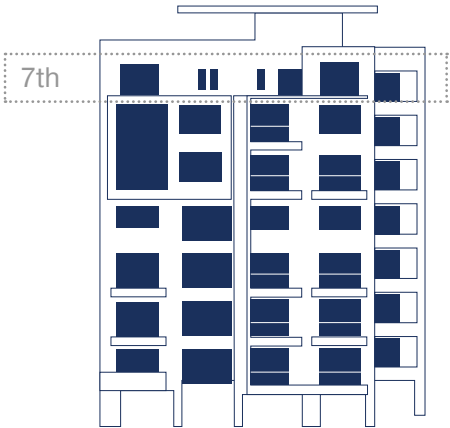


2-bedroom

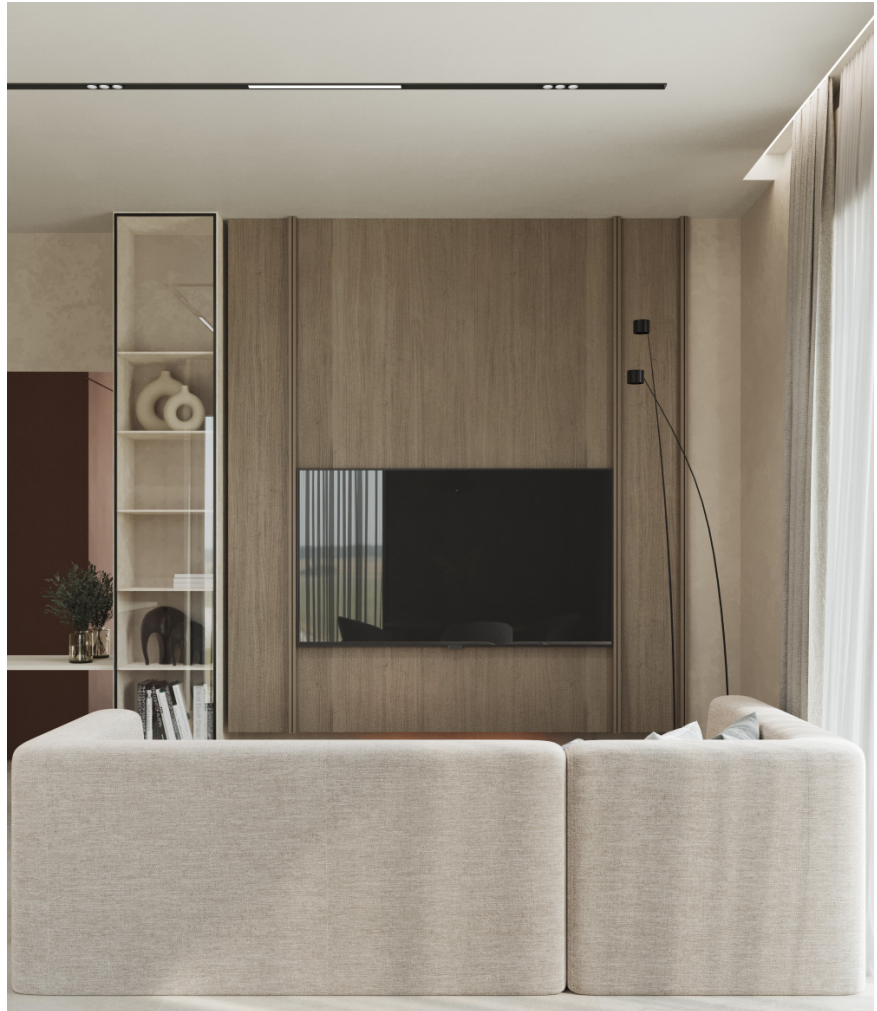
6.1
Total Area: 36.89 sqm
Balcony: 3.92 sqm

6.2
Total Area: 33.24 sqm

6.3
Total Area: 40.17 sqm



Interior views





Interior views



Unit Summary

Unit	Type	Gross sqm	Balconies (sqm)
1.1	1 bedroom	59.80	2.25 + 11.56
1.2	Studio	31.05	
1.3	Studio	27.24	6
1.4	Studio	30.18	5.52
1.5	Studio	37.76	6
2.1	Studio	27.21	3.92
2.2	Studio	34.31	6
2.3	1 bedroom	58.28	6
2.4	1 bedroom	66.71	6+5.52
3.1	1 bedroom	61.72	6+3.92
3.2	2 bedroom	75.50+40.67 gallery	6+5.52+5.52
4.1	Studio	30.90	3.92
4.2	Studio	36.23	6
5.1	Studio	27.21	3.92
5.2	Studio	34.33	6
5.3	1 bedroom	58.28	6
5.4	1 bedroom	66.71	6+5.52
6.1	2 bedroom	63.96+36.89 gallery	3.92+6+3.92
6.2	2 bedroom	58.28+33.24 gallery	6
6.3	2 bedroom	66.71+40.17 gallery	6+5.52

the
GREEK
house



office@greekhouse.co.il



+972529120446



Tsimiski 6, 54624
Thessaloniki



www.greekhouse.co.il