



ANAKTORIOU 6 BUILDING

NORTH CENTER THESSALONIKI



STRATEGIC LOCATION

Walking distance from the main universities in the city, the museum complex and the main tourist sites.





The **Saranta Ekklesies** neighborhood is located in the city center near the museum complex, the renewed conference center and the main universities in the city (Aristotle and Macedonia are the main ones). The main tourist sites in the city are within walking distance, as well as two planned metro stations.

Aristotle University



The White Tower



ANAKTORIOU 6 BUILDING

The building rises to a height of 3 floors above the pillared floor, and includes 15 apartments in total, of various types including - studio apartments, a one bedroom apartment on one level as well as a duplex connected to the roof terrace.

The building is independent and all apartments have more than one air direction, in a spacious design. The building has common areas including a lighted half-basement floor, an accessible roof, a backyard and a front floor with columns.

Opposite the building there is a restaurant and café that characterize the commercial businesses in the neighborhood.

The neighborhood is located on a hill so that the roof of the building has an open view of the entire city, the port and the sea.

The neighborhood is characterized by family and young residences alongside student residences, due to its proximity to the central university complex in the city.

View from the building



Ground Floor

Studio

G1

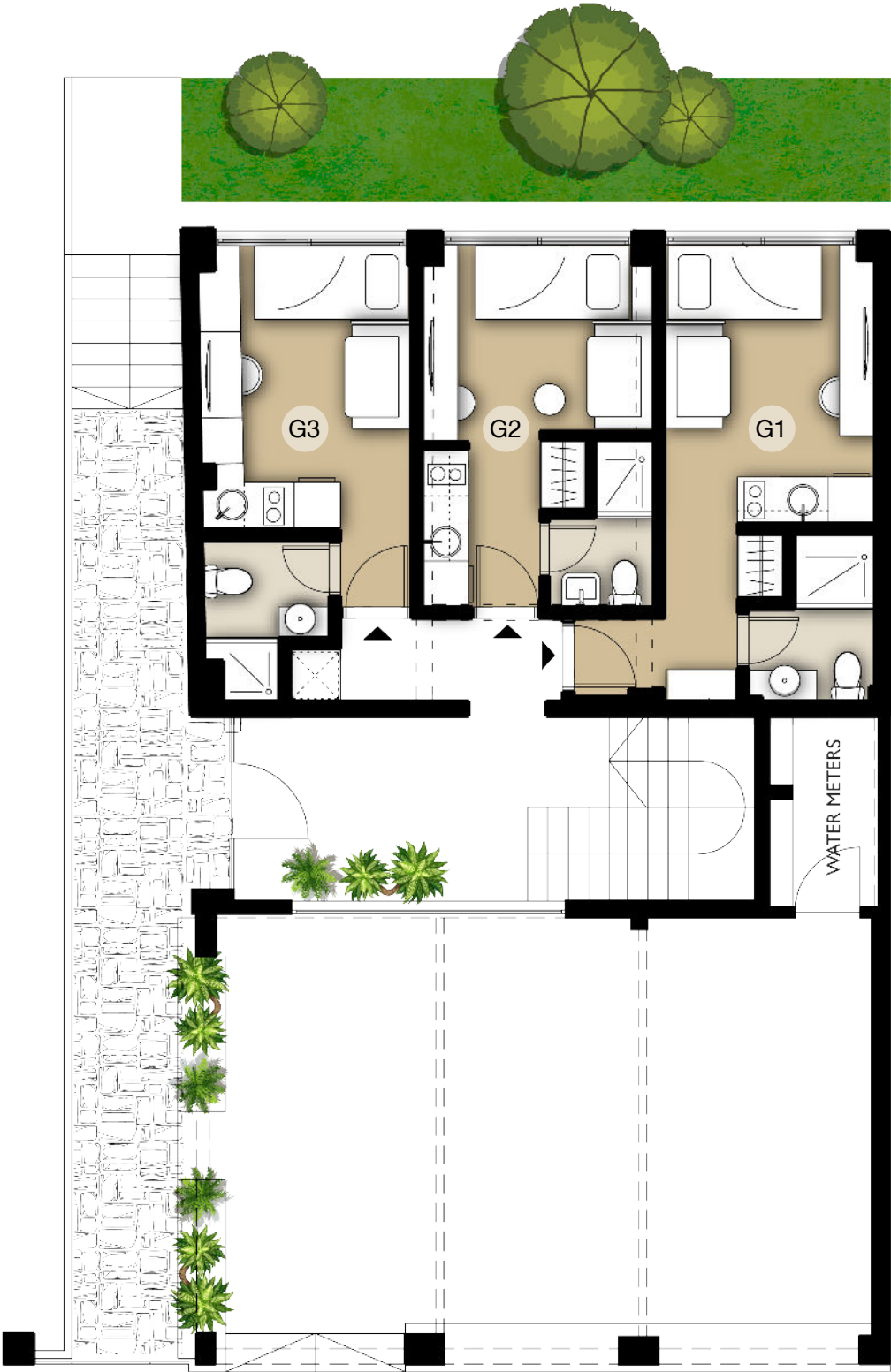
Total Area: 23,35 sqm

G2

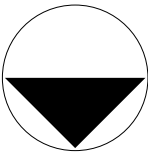
Total Area: 18,11 sqm

G3

Total Area: 19,44 sqm

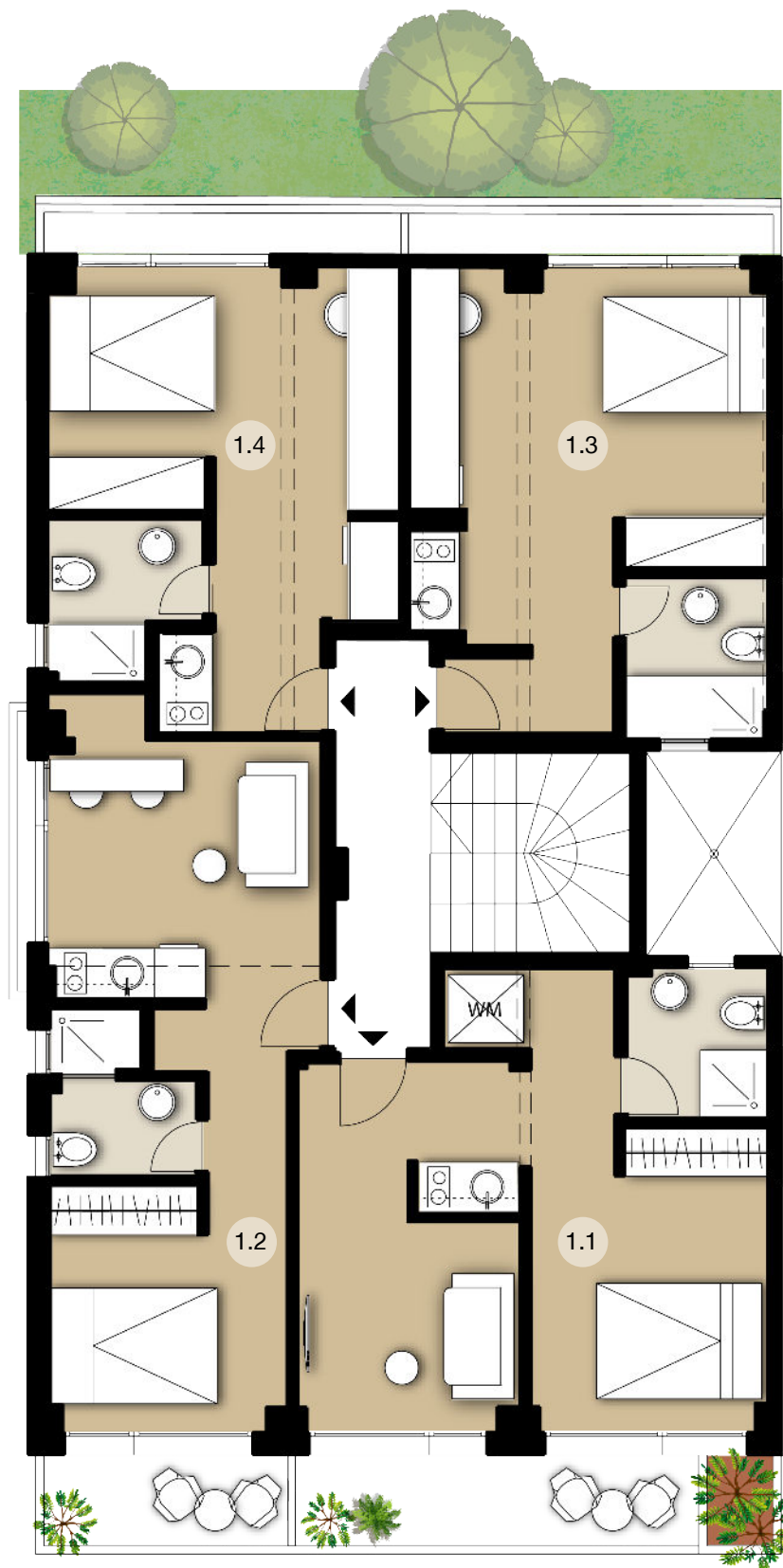


ANAKTORIOU STREET

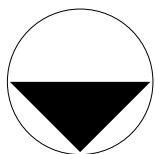


Ground Floor

1st Floor - Typical Floor



ANAKTORIOU STREET



1 bedroom

1.1

Total: 45,88 sqm

Balcony: 7,2 sqm

1.2

Total: 38,05 sqm

Balcony North: 3,4 sqm

Balcony East: 0,5 sqm

Studio

1.3

Total: 30,21 sqm

Balcony: 2,4 sqm

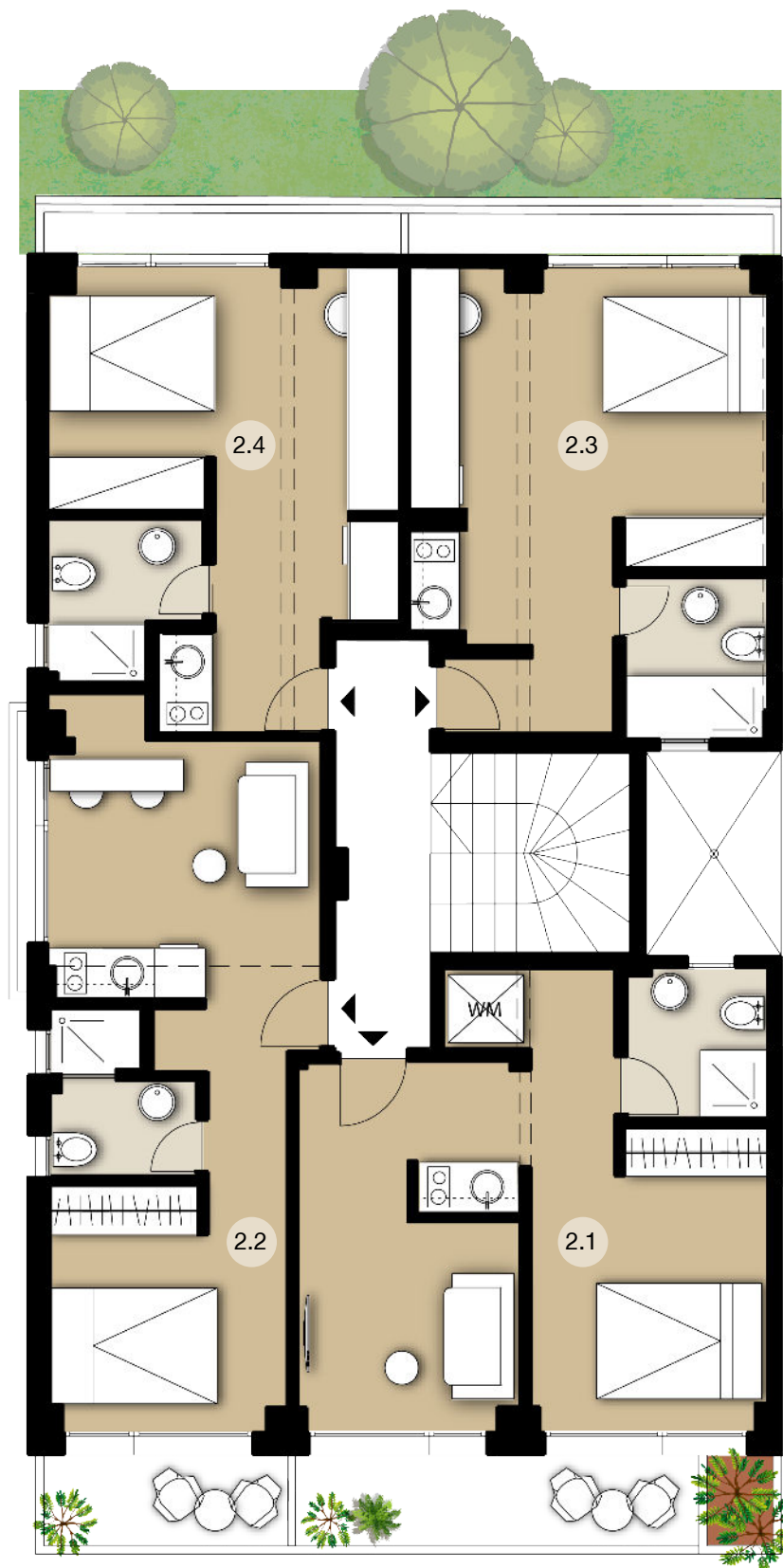
1.4

Total: 31,9 sqm

Balcony: 1,16 sqm



2nd Floor - Typical Floor



ANAKTORIOU STREET

1 bedroom

2.1

Total: 45,99 sqm

Balcony: 7,2 sqm

2.2

Total: 37,93 sqm

Balcony North: 3,4 sqm

Balcony East: 0,5 sqm

Studio

2.3

Total: 30,21 sqm

Balcony: 2,4 sqm

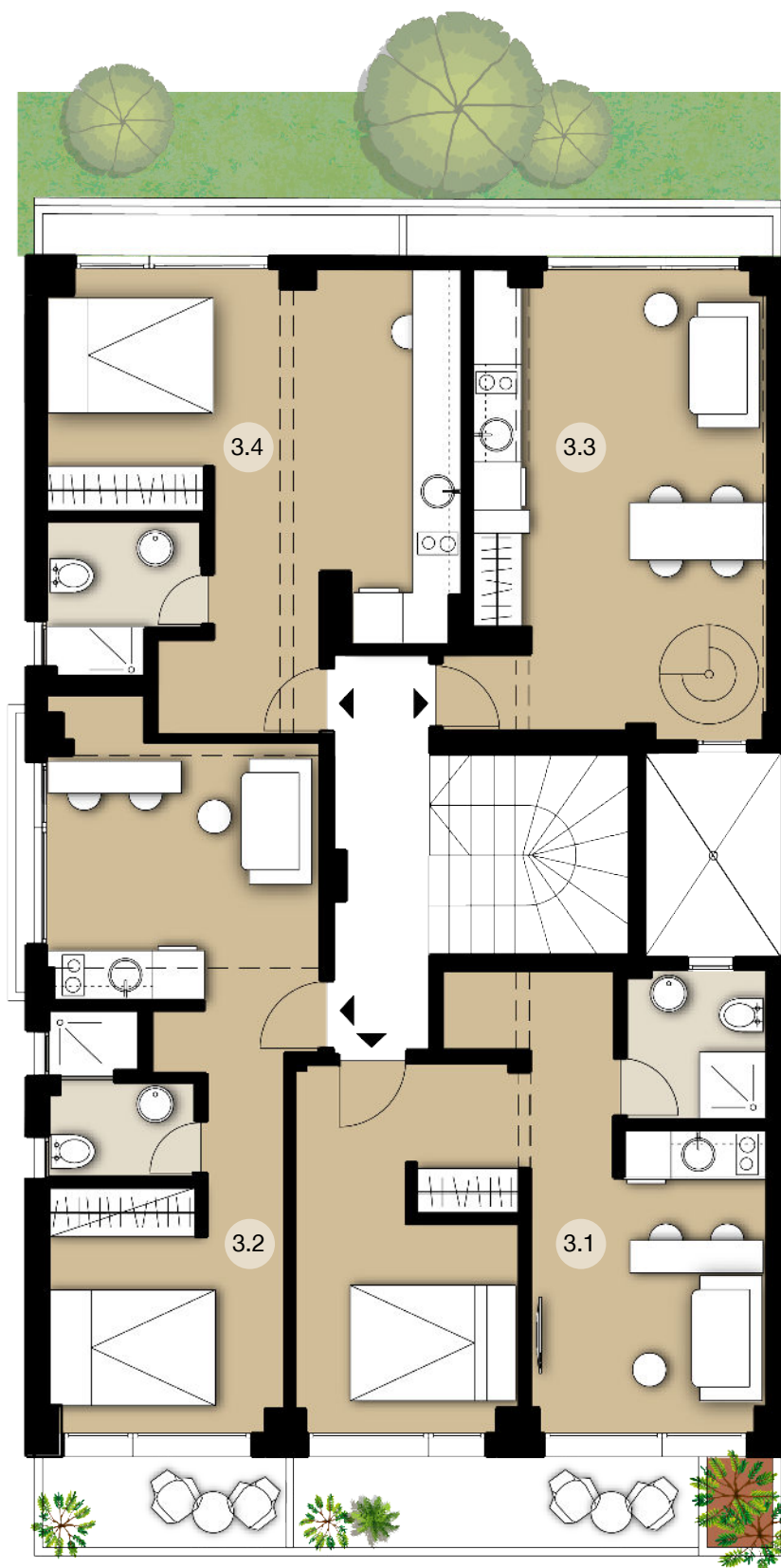
2.4

Total: 31,9 sqm

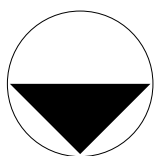
Balcony: 1,16 sqm



3rd Floor



ANAKTORIOU STREET



1 bedroom

3.1

Total: 45,99 sqm

Balcony: 7,2 sqm

3.2

Total: 34,11 sqm

Balcony North: 3,4 sqm

Balcony East: 0,5 sqm

3.4

Total: 32,21 sqm

Balcony: 2,4 sqm

1 bedroom Duplex

3.3

Total: 30 sqm

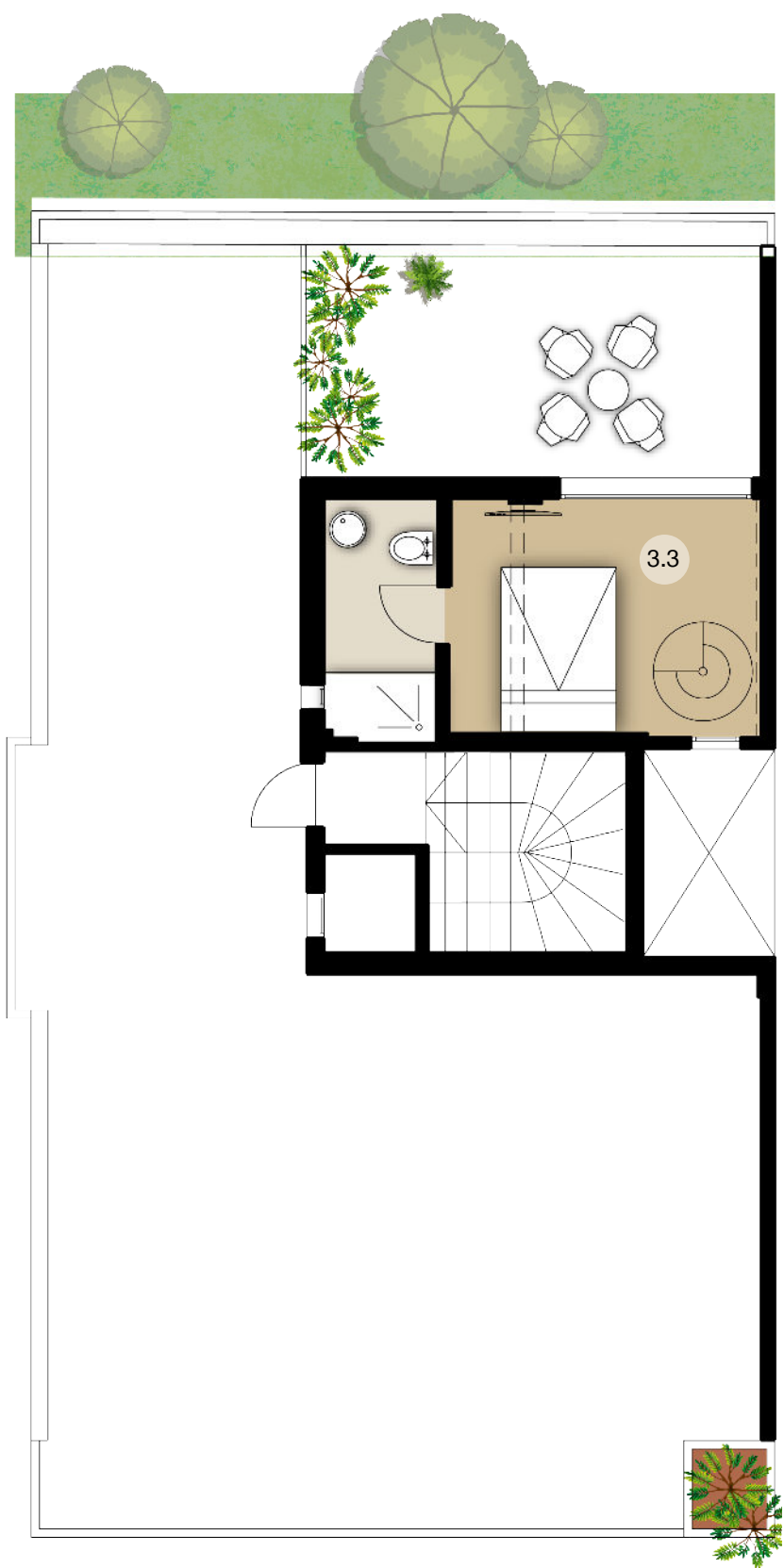
Balcony: 1,16 sqm

Gallery: 18 sqm
+ 18 sqm private roof terrace

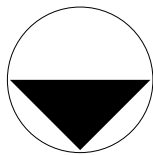
3rd Floor



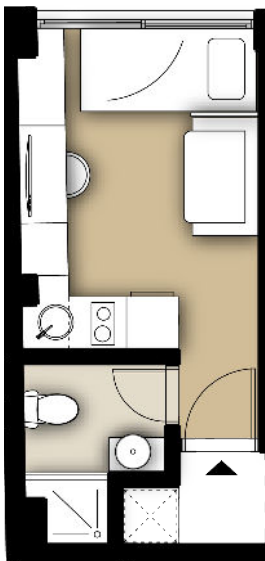
4th Floor



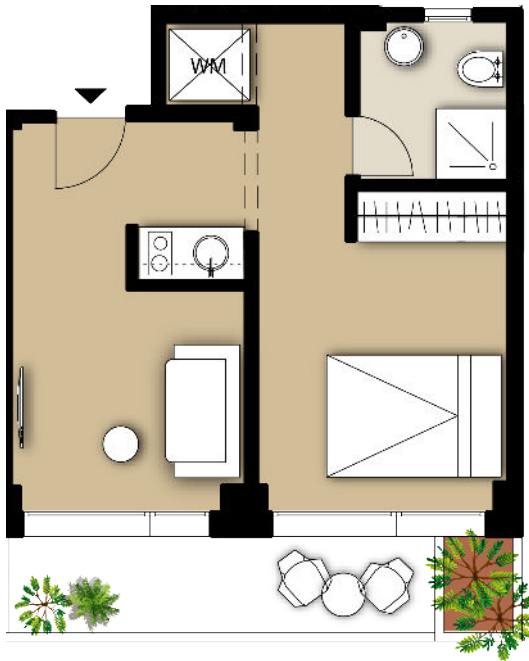
ANAKTORIOU STREET



4th Floor		







Unit Summary

Unit	Floor	Type	Covered area (sqm)
G1	Ground	Studio	23,35
G2	Ground	Studio	18,11
G3	Ground	Studio	19,44
1.1	1st Floor	1 bedroom	38,68+7,2 Balcony
1.2	1st Floor	1 bedroom	34,15+3,4 Balcony
1.3	1st Floor	Studio	27,81+2,4 Balcony
1.4	1st Floor	Studio	30,74+1,16 Balcony
2.1	2nd Floor	1 bedroom	38,79+7,2 Balcony
2.2	2nd Floor	1 bedroom	34,03+3,4 Balcony
2.3	2nd Floor	Studio	27,81+2,4 Balcony
2.4	2nd Floor	Studio	30,74+1,16 Balcony
3.1	3rd Floor	1 bedroom	38,78+7,2 Balcony
3.2	3rd Floor	1 bedroom	34,11+3,4 Balcony
3.3	3rd Floor	1 bedroom Duplex	30+1,16 Balcony +18 Gallery+18 roof terrace
3.4	3rd Floor	Studio	32,21+2,4 Balcony

the
GREEK
house



info@greekhouse.co.il



+972529120446



Ioanni Grypari 13, 54248
Thessaloniki



www.greekhouse.co.il