

# IOANNOU CHRISOSTOMOU 15

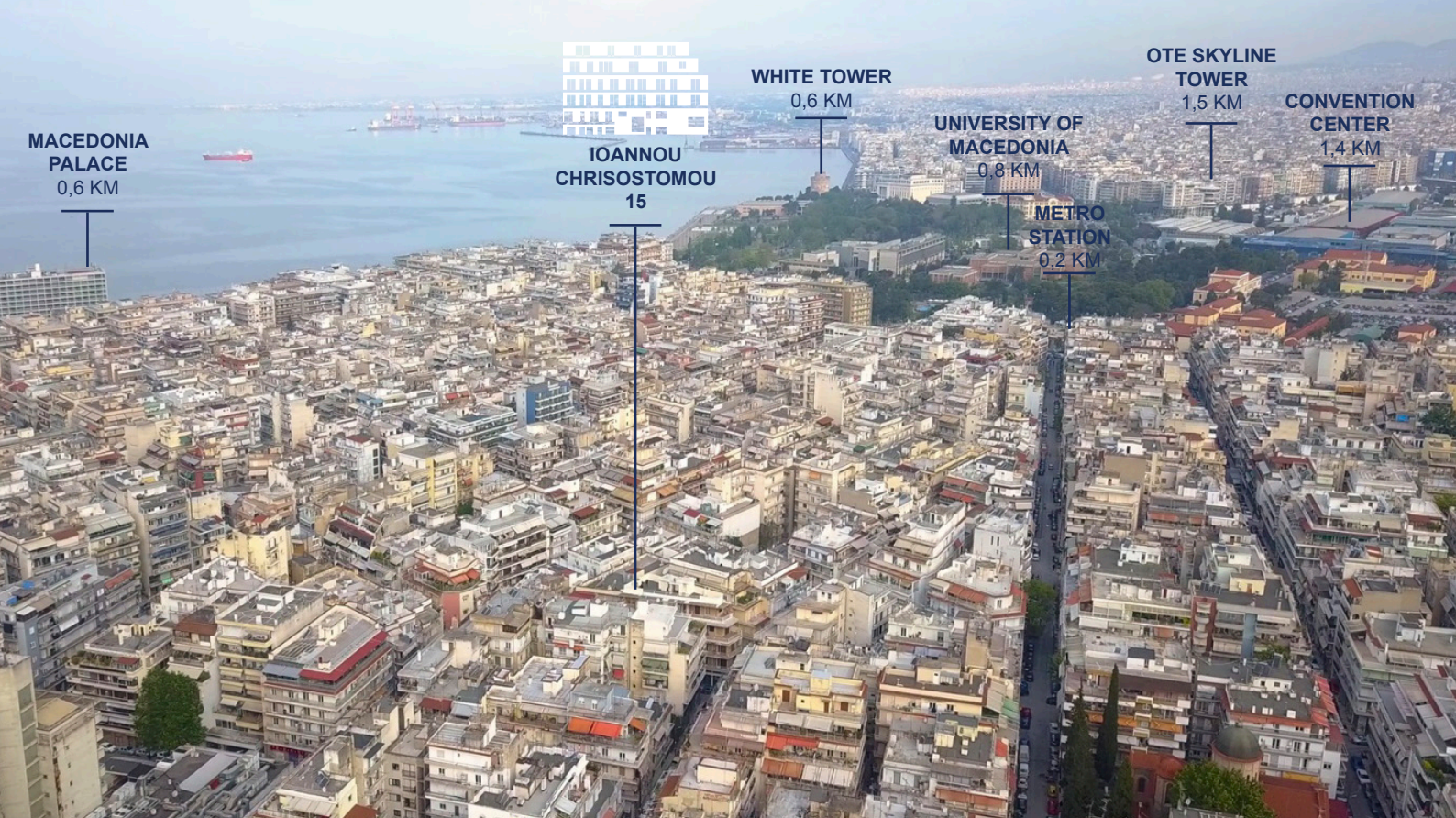
EAST CENTER THESSALONIKI

[Press for video](#)

the  
**GREEK**  
house

**GORNITZKY**  
THERE IS ALWAYS A WAY  
Developers' Legal consultants  
in Israel





## STRATEGIC LOCATION

On the metro axis within walking distance of the city's leading universities, the port promenade and the tourist area of the city center.







The FALIRO area is located in the city center and is populated mainly by students due to its location only a few minutes walk from the city's major university campuses and the rental demand is among the highest in the city.

In this area, there are many hotels and guest rooms, restaurants and cafes, in addition to the proximity to the main museum and the beach promenade. A nearby metro station and high accessibility by transportation to all parts of the city.

White Tower



University





## IOANNOU CHRYSOSTOMOU 15 BUILDING

The building is located on the corner of two quiet, one-way streets and therefore benefits from three open facades, including 6 levels connected by an elevator, in which 37 apartments of various types are architecturally designed, furnished and include electrical appliances.

Along the facades of the building are long balconies whose area increases as you level up.

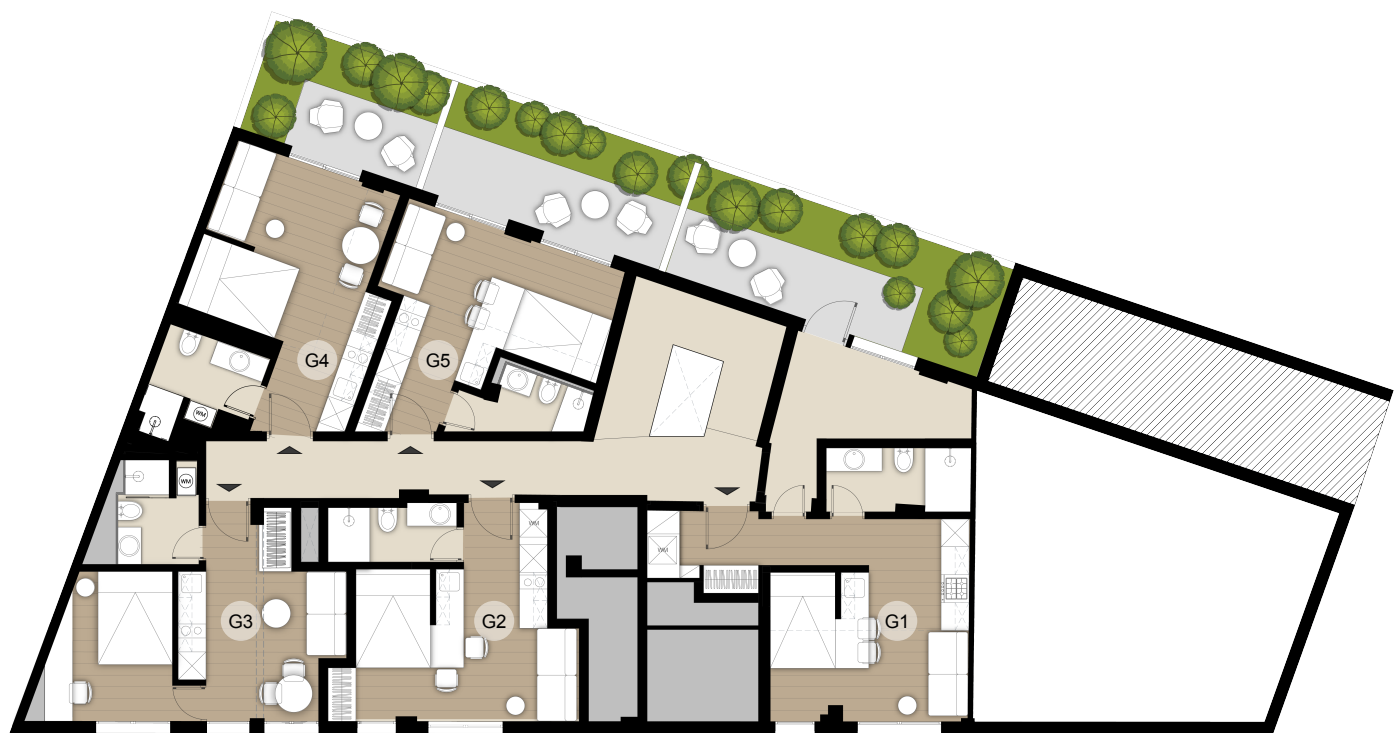
The seventh level of the building is a common roof terrace for all tenants from which a panoramic view of the city can be seen.

In the vicinity of the building there are many AIRBNB apartments, gyms, cafeterias and coffee shops.





Ground Floor



IOANNOU CHRYSOSTOMOU

1 bedroom

G1

Total Area: 58,26 sqm  
Garden: 18,60 sqm

G2

Total Area: 32,25 sqm

G3

Total Area: 39,89 sqm

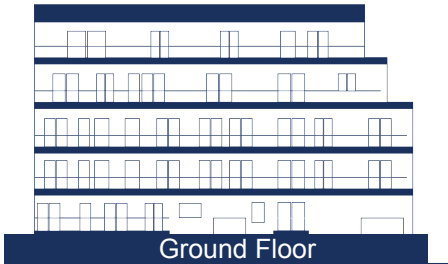
Studio

G4

Total Area: 35,5 sqm  
Garden: 10,94 sqm

G5

Total Area: 30,97 sqm  
Garden: 14,33 sqm





1st Floor



IOANNOU CHRYSOSTOMOU

1 bedroom XL

1.2

Total Area: 49,51 sqm  
Balcony: 2,89 sqm

Studio

1.5

Total Area: 34,41 sqm  
Balcony: 1,53 sqm

1 bedroom

1.1

Total Area: 35,13 sqm  
Balcony: 9,40 sqm

1.6

Total Area: 32,13 sqm  
Balcony: 3,28 sqm

1.3

Total Area: 33,6 sqm  
Balcony: 1,40 sqm

1.4

Total Area: 37,63 sqm  
Balcony: 5,94 sqm





2nd Floor



IOANNOU CHRYSOSTOMOU

1 bedroom

- 2.1  
Total Area: 39,52 sqm  
Balcony: 11,19 sqm
- 2.2  
Total Area: 32,65 sqm  
Balcony: 4,58 sqm
- 2.3  
Total Area: 30,19 sqm  
Balcony: 5,24 sqm
- 2.4  
Total Area: 29,52 sqm  
Balcony: 3,74 sqm
- 2.5  
Total Area: 37,2 sqm  
Balcony: 5,41 sqm

Studio

- 2.6  
Total Area: 31,82 sqm  
Balcony: 1,90 sqm
- 2.7  
Total Area: 29,55 sqm  
Balcony: 2,90 sqm
- 2.8  
Total Area: 12,85 sqm  
Balcony: 3,31 sqm





3rd Floor



IOANNOU CHRYSOSTOMOU

1 bedroom

- 3.1  
Total Area: 39,52 sqm  
Balcony: 10,96 sqm
- 3.2  
Total Area: 32,65 sqm  
Balcony: 4,58 sqm
- 3.3  
Total Area: 30,19 sqm  
Balcony: 4,81 sqm
- 3.4  
Total Area: 29,52 sqm  
Balcony: 5,04 sqm
- 3.5  
Total Area: 37,2 sqm  
Balcony: 4,81 sqm

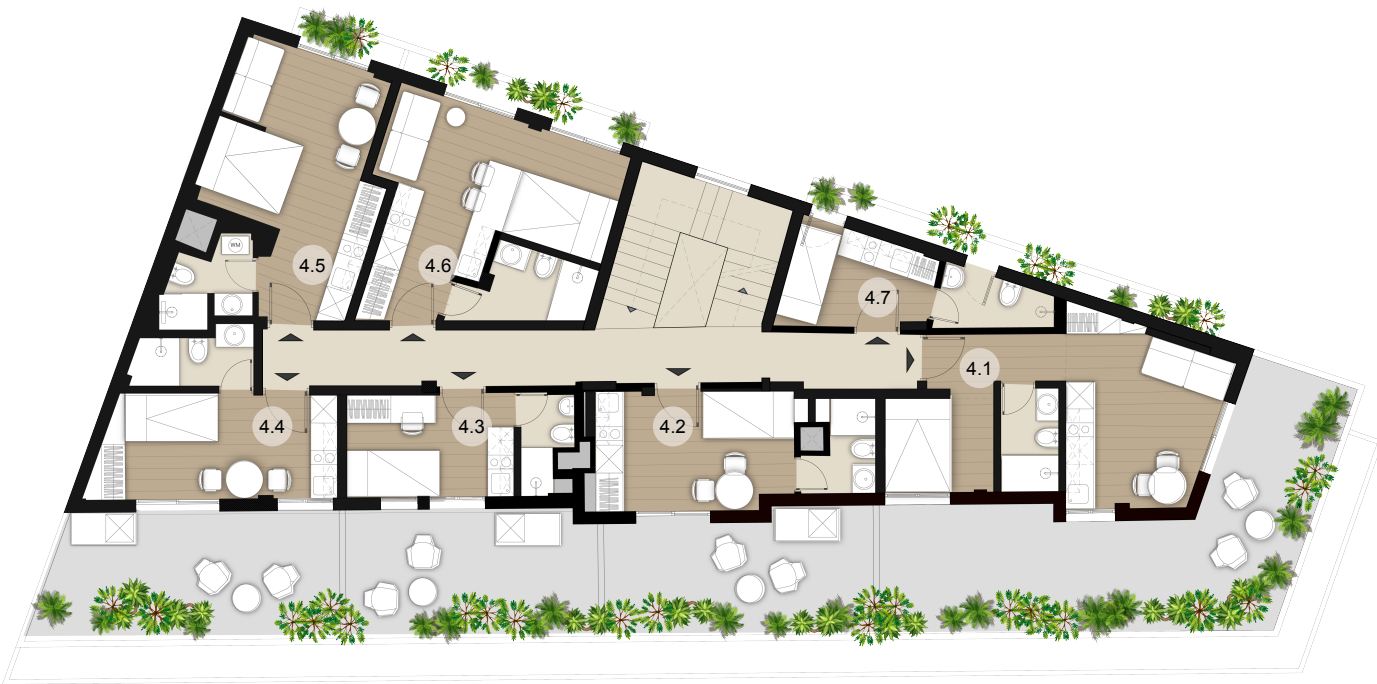
Studio

- 3.6  
Total Area: 31,82 sqm  
Balcony: 1,98 sqm
- 3.7  
Total Area: 29,55 sqm  
Balcony: 10,96 sqm
- 3.8  
Total Area: 12,85 sqm  
Balcony: 3,29 sqm





4th Floor



IOANNOU CHRYSOSTOMOU

1 bedroom

4.1

Total Area: 35,38 sqm  
Balcony: 33,01 sqm

Studio

4.2

Total Area: 21,48 sqm  
Balcony: 15,89 sqm

4.3

Total Area: 16,42 sqm  
Balcony: 15,89 sqm

4.4

Total Area: 22,62 sqm  
Balcony: 18,85 sqm

4.5

Total Area: 31,15 sqm  
Balcony: 1,46 sqm

4.6

Total Area: 31,13 sqm  
Balcony: 3,19 sqm

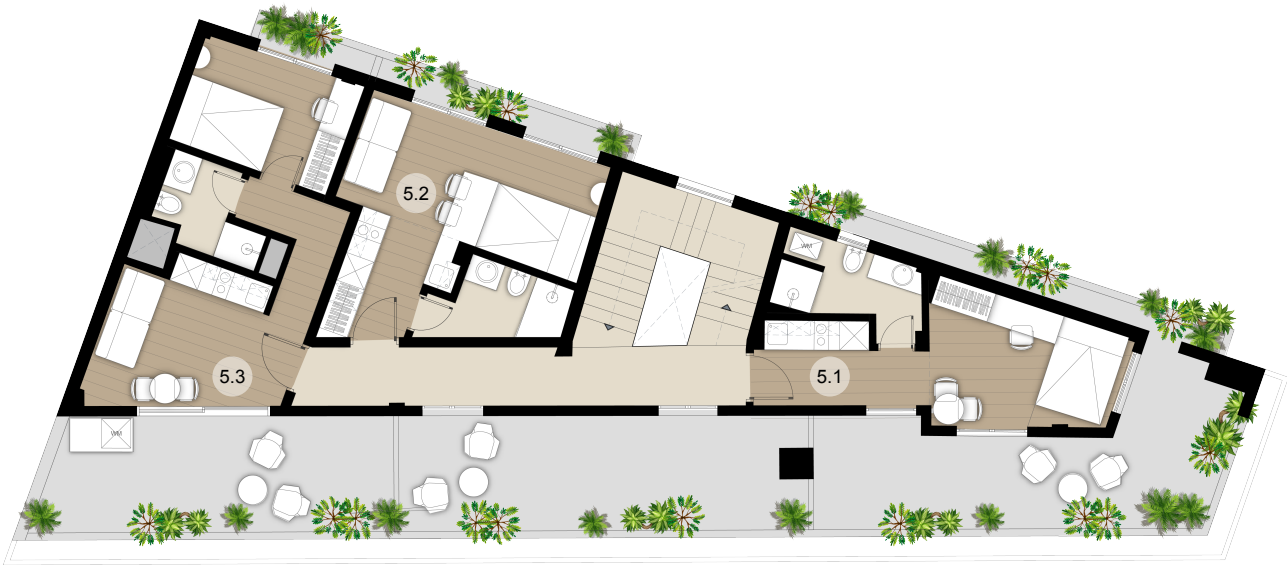
4.7

Total Area: 14,52 sqm  
Balcony: 5,32 sqm





5th Floor



1 bedroom

5.3

Total Area: 42,46 sqm  
Balcony: 28,20 sqm

Studio

5.1

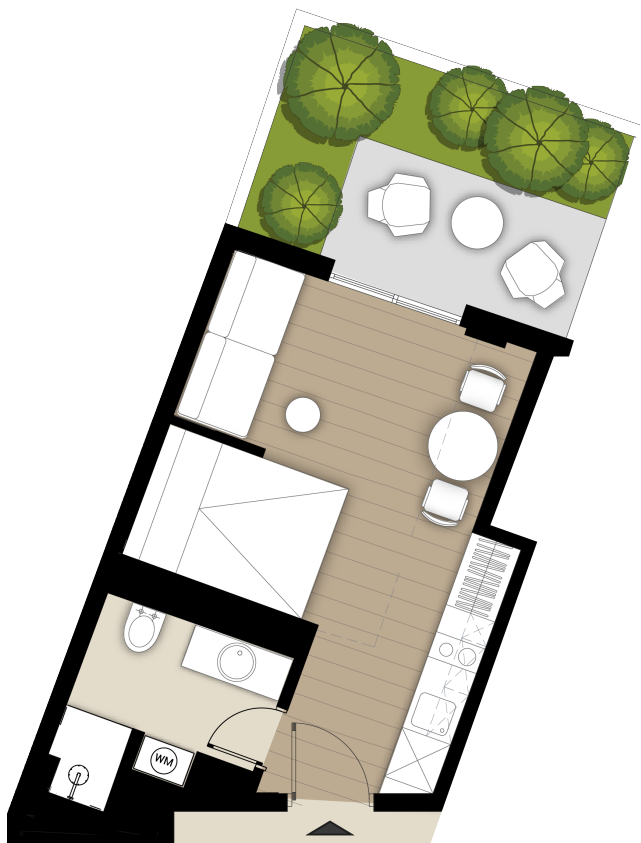
Total Area: 32,9 sqm  
Balcony: 28,2 sqm

5.2

Total Area: 33,14 sqm  
Balcony: 21,11 sqm



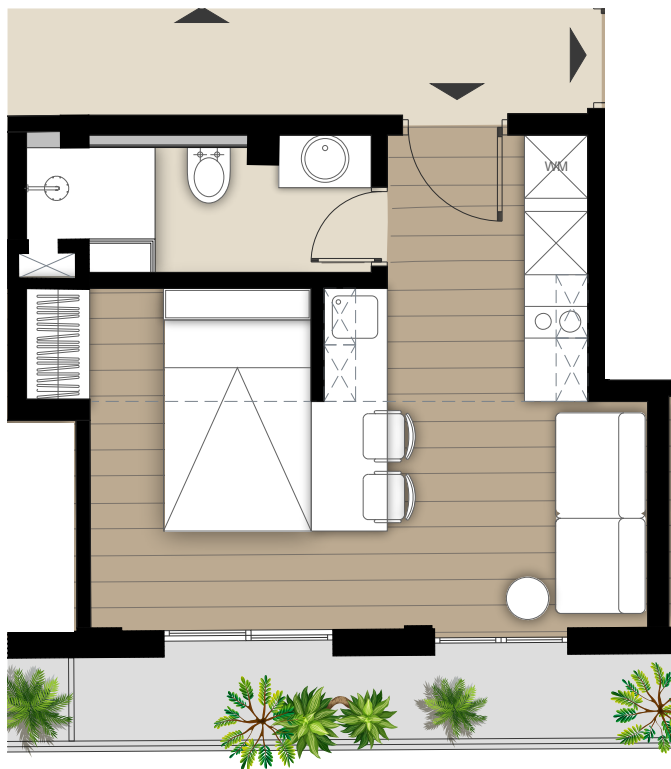








Apartment 2.2





















## Unit Summary

Unit	Floor	Type	Total area (sqm)
G1	Ground	1 bedroom	58,26+18,60 Garden
G2	Ground	1 bedroom	32,25
G3	Ground	1 bedroom	39,89
G4	Ground	Studio	35,5+10,94 Garden
G5	Ground	Studio	30,97+14,33 Garden
1.1	1st Floor	1 bedroom	35,13+9,4 Balcony
1.2	1st Floor	1 bedroom XL	49,51+2,89 Balcony
1.3	1st Floor	1 bedroom	33,6+1,4 Balcony
1.4	1st Floor	1 bedroom	37,63+5,94 Balcony
1.5	1st Floor	Studio	34,41+1,53 Balcony
1.6	1st Floor	Studio	32,13+3,28 Balcony
2.1	2nd Floor	1 bedroom	39,52+11,19 Balcony
2.2	2nd Floor	1 bedroom	32,65+4,58 Balcony
2.3	2nd Floor	1 bedroom	30,19+5,24 Balcony
2.4	2nd Floor	1 bedroom	29,52+3,74 Balcony
2.5	2nd Floor	1 bedroom	37,2+5,41 Balcony
2.6	2nd Floor	Studio	31,82+1,90 Balcony
2.7	2nd Floor	Studio	29,55+2,90 Balcony
2.8	2nd Floor	Studio	12,58+3,31 Balcony
3.1	3rd Floor	1 bedroom	39,52 + 10,96 Balcony
3.2	3rd Floor	1 bedroom	32,65 + 4,58 Balcony
3.3	3rd Floor	1 bedroom	30,19+ 4,81 Balcony
3.4	3rd Floor	1 bedroom	29,52+ 5,04 Balcony
3.5	3rd Floor	1 bedroom	37,2+ 4,81 Balcony
3.6	3rd Floor	Studio	31,28+ 1,98 Balcony
3.7	3rd Floor	Studio	29,55+10,96 Balcony
3.8	3rd Floor	Studio	12,85+ 3,29 Balcony



Unit	Floor	Type	Covered area (sqm)
4.1	4th Floor	1 bedroom	35,38+33,01 Balcony
4.2	4th Floor	Studio	21,48+15,89 Balcony
4.3	4th Floor	Studio	16,42+15,89 Balcony
4.4	4th Floor	Studio	22,62+18,85 Balcony
4.5	4th Floor	Studio	31,15+1,46 Balcony
4.6	4th Floor	Studio	31,13+3,19 Balcony
4.7	4th Floor	Studio	14,52+5,32 Balcony
5.1	5th Floor	Studio	32,9+28,2 Balcony
5.2	5th Floor	Studio	33,14+21,11 Balcony
5.3	5th Floor	1 bedroom	42,46+28,2 Balcony



All the information presented in this brochure, including all pictures, illustrations, floor plans, furnishings, accessories and dimensions and etc., is for illustrative purposes only, and are preliminary, conceptual, non-final and non-binding plans of the project, and as such are subject to further alterations. The binding terms shall be included in the signed final contract and in the technical specifications that constitute an integral part of the final contract.

the  
GREEK  
house



[info@greekhouse.co.il](mailto:info@greekhouse.co.il)



+972529120446



Ioanni Grypari 13, 54248  
Thessaloniki



[www.greekhouse.co.il](http://www.greekhouse.co.il)