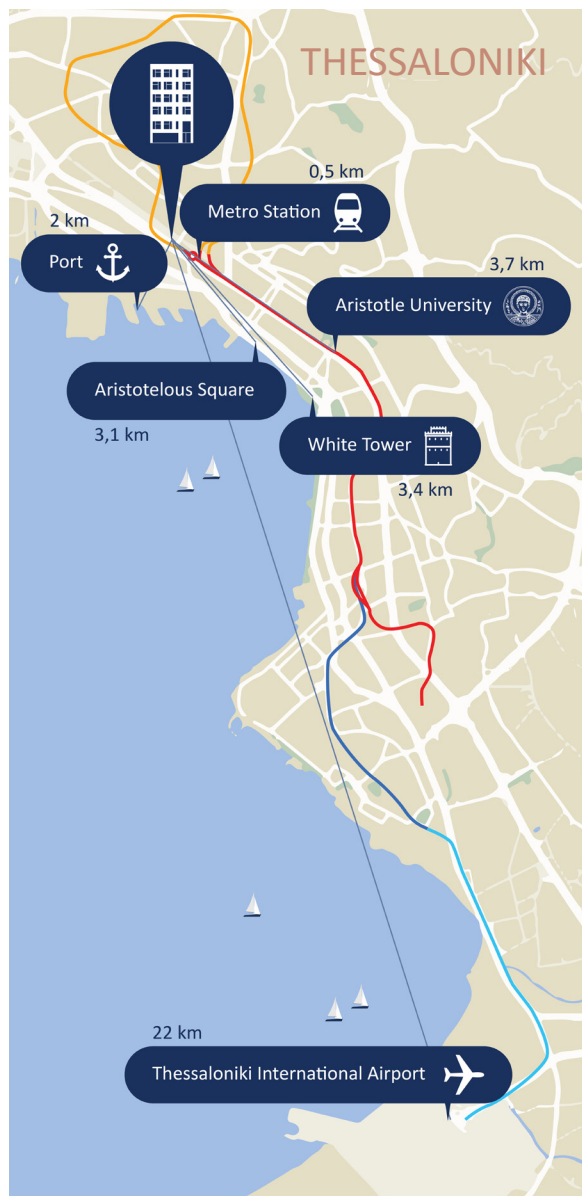




VITSI RESIDENCE

WEST THESSALONIKI - SOHO AREA



STRATEGIC LOCATION

With convenient transport links, shopping centers, university faculties and concentration of offices and workplaces.





West Thessaloniki in the 'One Salonica' area, is the area that has become an extension of the city center in recent years and offers new residential projects alongside some of the best entertainment venues in the city, new employment centers that are developing at a fast pace and the city's largest shopping centers with international brands that are a magnet for all the city's residents.



One Salonica



Hub 26

VITSI 19 RESIDENCE

The building has a height of 6 floors above a basement floor, and includes a modern elevator that reaches up to the roof of the building that stretches out in front of the view.

As you climb the floors, the view of the entire city unfolds. On the north side up to the mountains surrounding the city and on the south side an open view of the harbor and the sea.

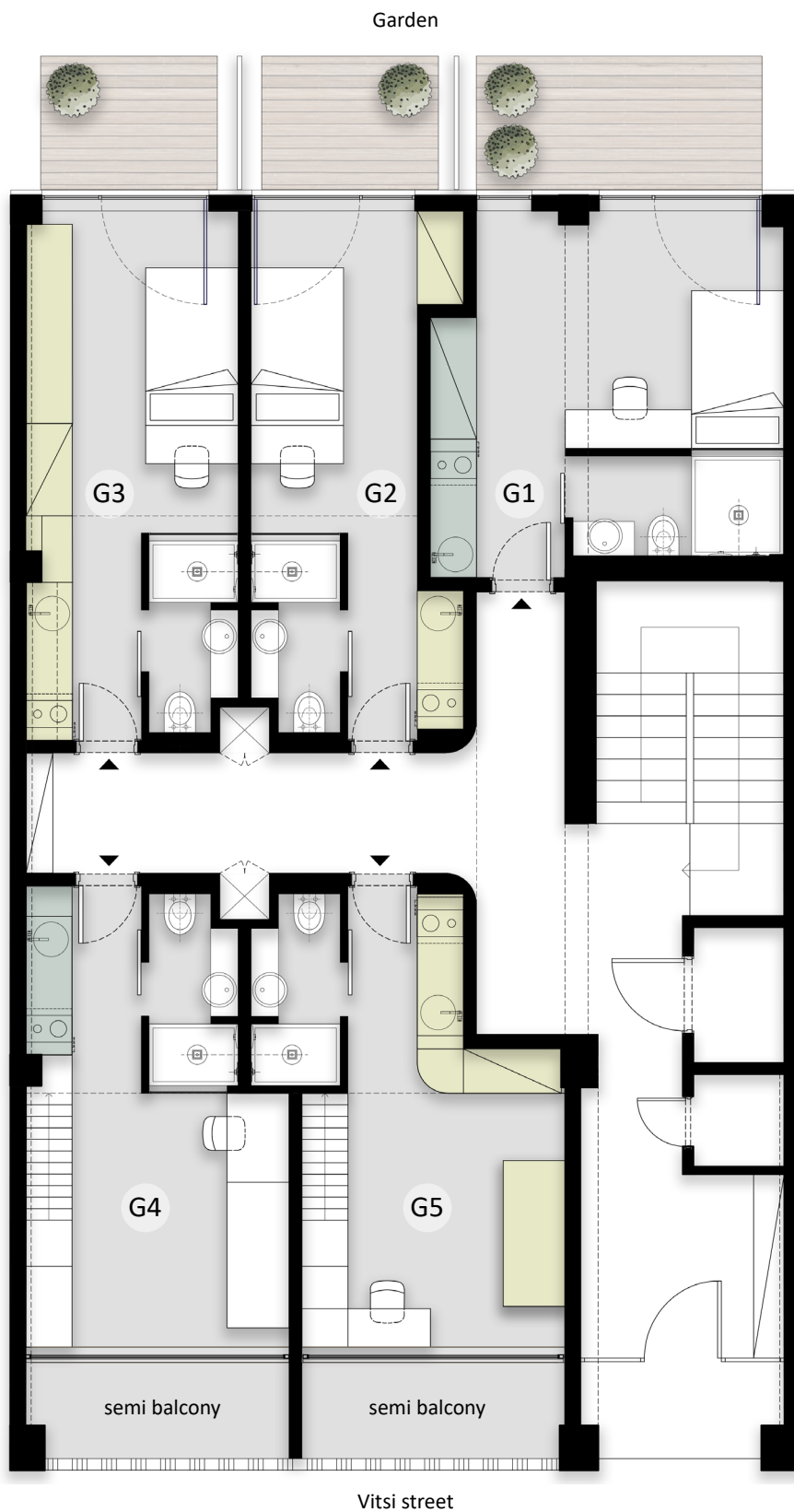
In the building there are 32 apartments for sale, each one is a separate registered unit and includes separate systems and meters.

The area is characterized by high demand for renovated studio apartments.

On top of the apartments area, the building has shared services in the common spaces for the convenience of the tenants including: a basement floor with a home cinema, a laundry room, bicycle parking, a reading room and a wide roof for day and night hanging.



Ground floor



Garden apartment

G1

Covered area 33,46 sqm

Garden 20,00 sqm

G2

Covered area 25,54 sqm

Garden 20,00 sqm

G3

Covered area 29,53 sqm

Garden 20,00 sqm

Loft apartment

G4

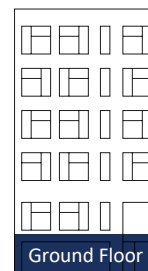
Covered area 36,53 sqm

Bed 1,40 m

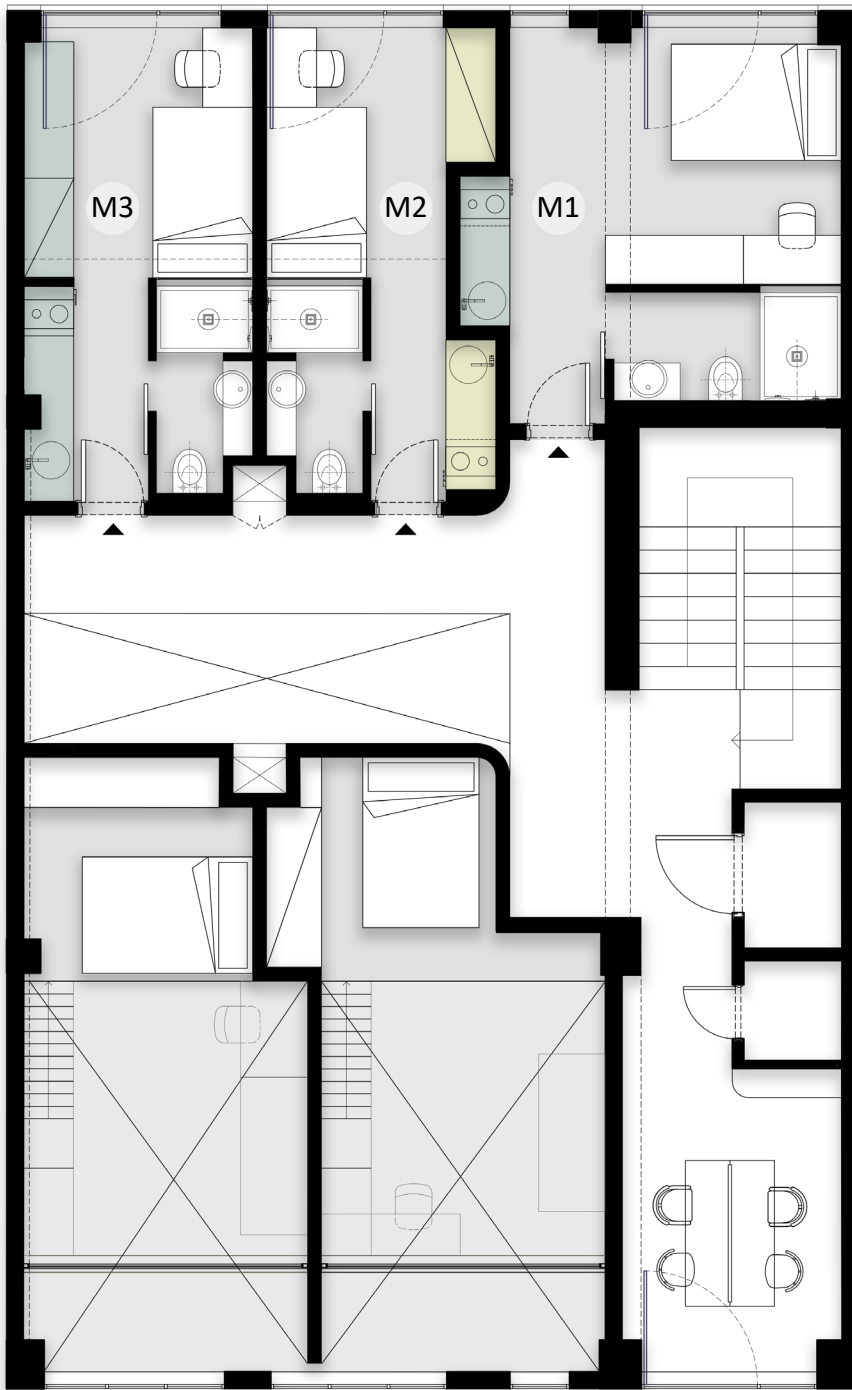
G5

Covered area 40,55 sqm

Bed 1,40 m



Mezzanine



Studio Apartment

M1

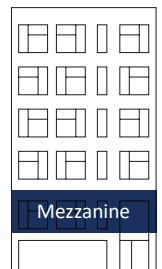
Covered area 30,02 sqm

M2

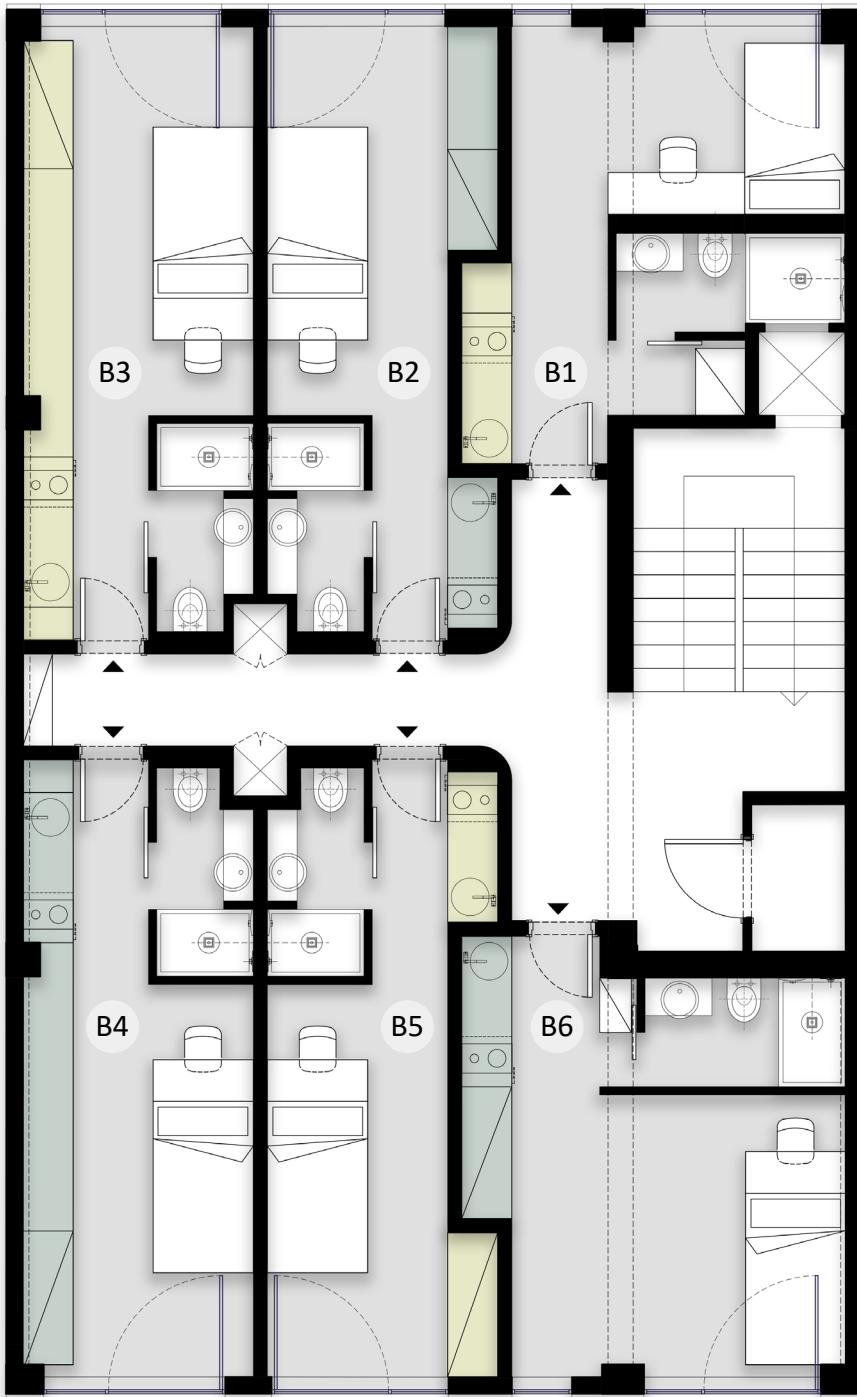
Covered area 21,23 sqm

M3

Covered area 23,76 sqm



Typical floor



Studio Apartment

B1
Covered area 30,38 sqm

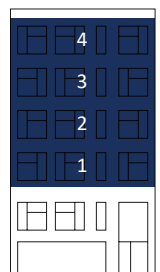
B2
Covered area 28,09 sqm

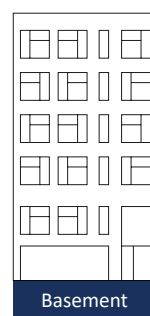
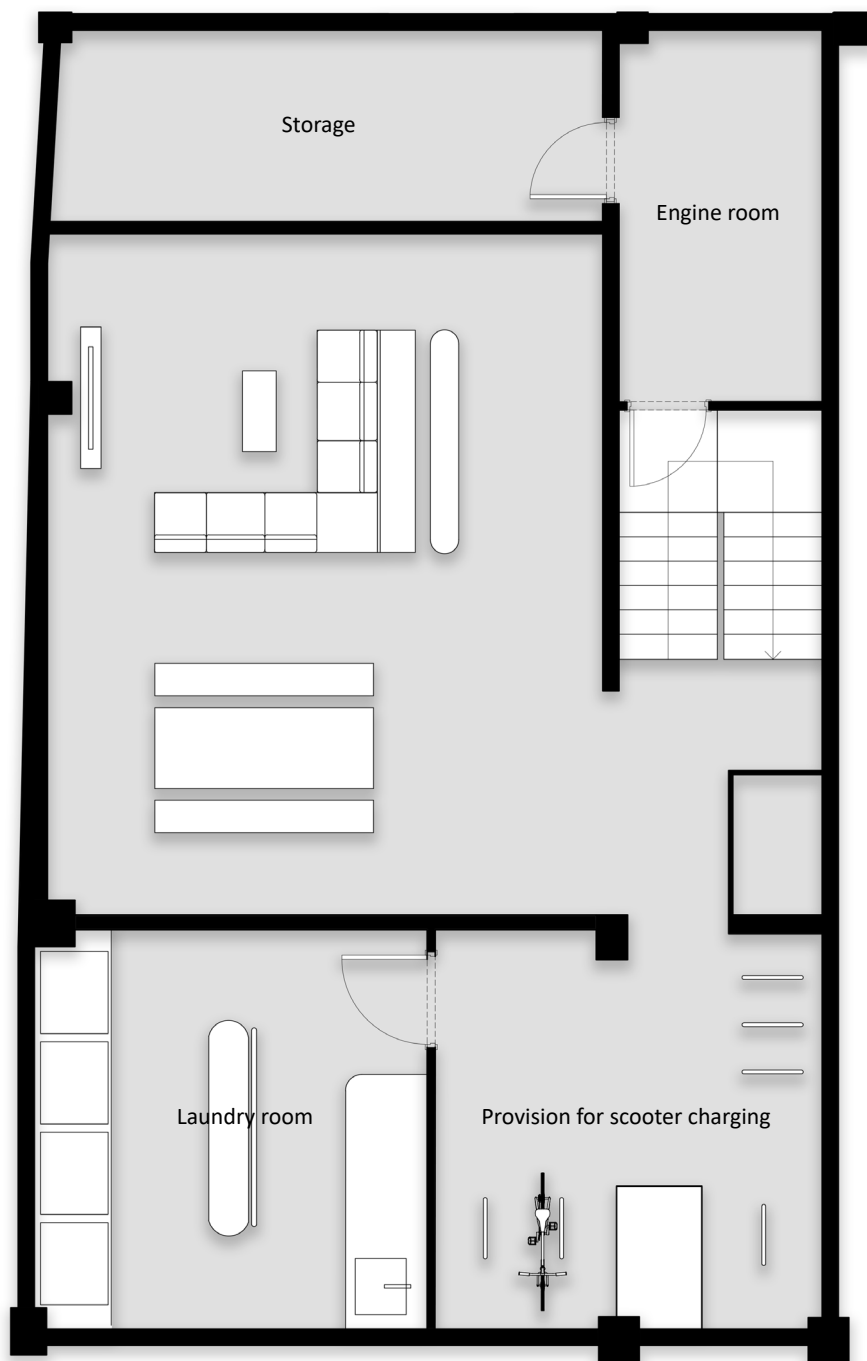
B3
Covered area 31,34 sqm

B4
Covered area 30,83 sqm

B5
Covered area 26,69 sqm

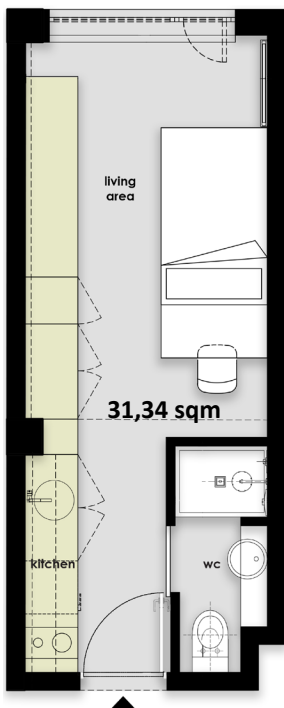
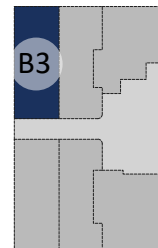
B6
Covered area 33,04 sqm





Typical Floor

Studio Apartment



Furniture / Appliance List

Kitchen

Fridge

Oven

2 Plate Electric Hob

Closets

Sofa

Bed 1.20m

Desk

1 Chair

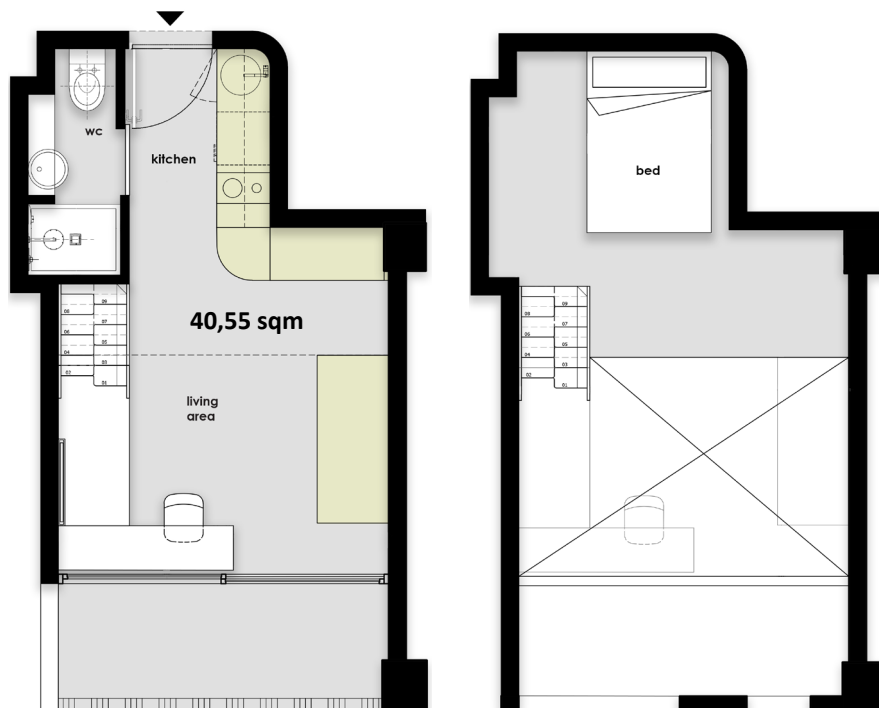
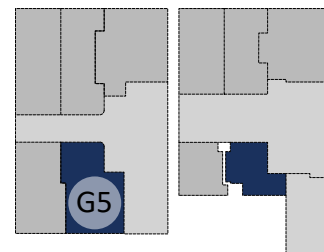
TV





Ground Floor

Loft Apartment



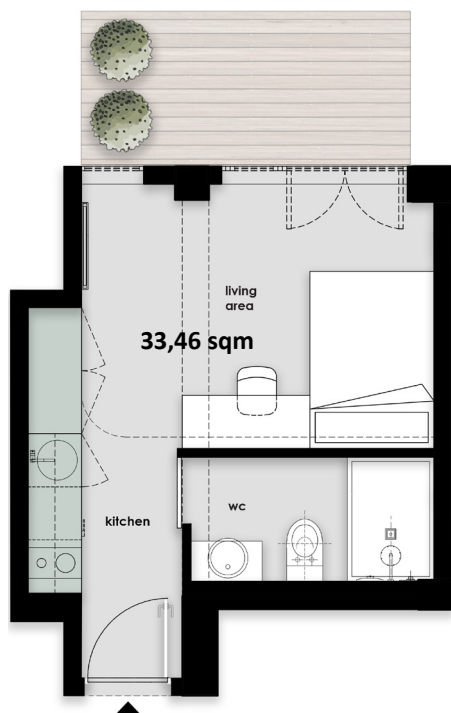
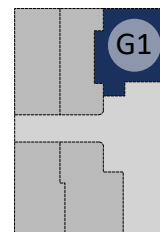
Furniture / Appliance List

- Kitchen
- Fridge
- Oven
- 2 Plate Electric Hob
- Closets
- Bed 1.40m
- Sofa
- Desk
- 1 Chair
- TV
- Balcony



Ground Floor

Garden Apartment



Furniture / Appliance List

Kitchen

Fridge

Oven

2 plate Electric Hob

Closets

Bed 1.40m

Desk

1 Chair

TV

Balcony



Unit Summary

Unit	Floor	Type	Total area (sqm)
G1	Ground	Garden Studio	33,46 + 20,00 (Garden)
G2	Ground	Garden Studio	25,54 + 20,00 (Garden)
G3	Ground	Garden Studio	29,53 + 20,00 (Garden)
G4	Ground	Loft	36,53 + 9,55 (Upper Floor)
G5	Ground	Loft	40,55 + 10,20 (Upper Floor)
M1	Mezzanine	Studio	30,02
M2	Mezzanine	Studio	21,23
M3	Mezzanine	Studio	23,76
B1	1st	Studio	30,38
B2	1st	Studio	28,09
B3	1st	Studio	31,34
B4	1st	Studio	30,83
B5	1st	Studio	26,69
B6	1st	Studio	33,04
C1	2nd	Studio	30,38
C2	2nd	Studio	28,09
C3	2nd	Studio	31,34
C4	2nd	Studio	30,83
C5	2nd	Studio	26,69
C6	2nd	Studio	33,04
D1	3rd	Studio	30,38
D2	3rd	Studio	28,09
D3	3rd	Studio	31,34
D4	3rd	Studio	30,83
D5	3rd	Studio	26,69
D6	3rd	Studio	33,04
E1	4th	Studio	30,38
E2	4th	Studio	28,09
E3	4th	Studio	31,34
E4	4th	Studio	30,83
E5	4th	Studio	26,69
E6	4th	Studio	33,04

the
GREEK
house



sales@greekhouseglobal.com



+306934636605



Ioanni Grypari 13, 54248
Thessaloniki



www.greekhouse.co.il